

OTDR: GT800U/GT801U/800A/801A

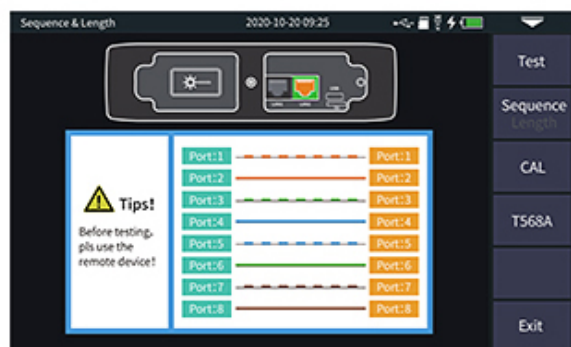
Touch screen type OTDR optical time domain reflectometer 100KM fiber length breakpoint inspection optical power red light integrated stable light source network cable test network cable length measurement line hunting 12 functions in one | Shopee Malaysia

Product Description

Mini Optical Time Domain Reflectometer Features: 4.3-inch multi-touch capacitive screen, support new gesture zoom function, screen screenshot Intelligent multi-function, twelve-in-one functional module: automatic OTDR, expert OTDR, event map, optical power meter, visible red light, adjustable light source, optical loss test, RJ45 network cable to line, RJ45 network cable distance measurement, RJ45 network cable Line hunting, flashlight, end detection (optional) Automatic OTDR, no complicated settings, one-key test Expert OTDR, professional measurement mode, simultaneous display of curve, list and MAP view Event blind zone 2.5m, attenuation blind zone 8m, measurement range up to 100KM Support optical test with less than -5dBm optical signal, high isolation bilateral filtering technology, Support automatic save, SOR file format, 8G storage capacity, can store 200,000 items Support Type-C charging interface, 4000mAh polymer battery, battery life is more than 12 hours



RJ45 line seeking/line sequence/ line length function



Line sequence measurement

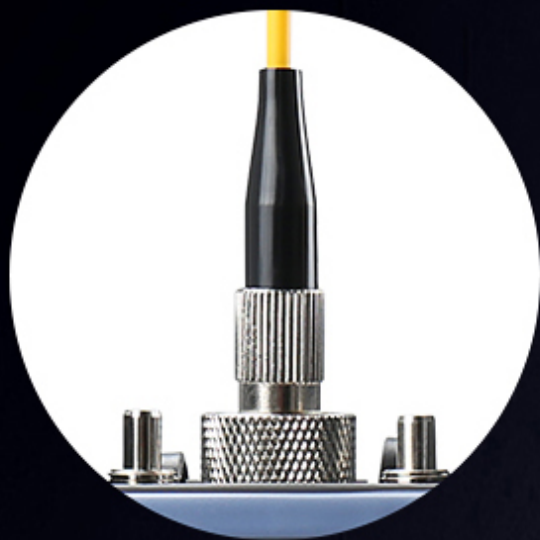


Line length measurement

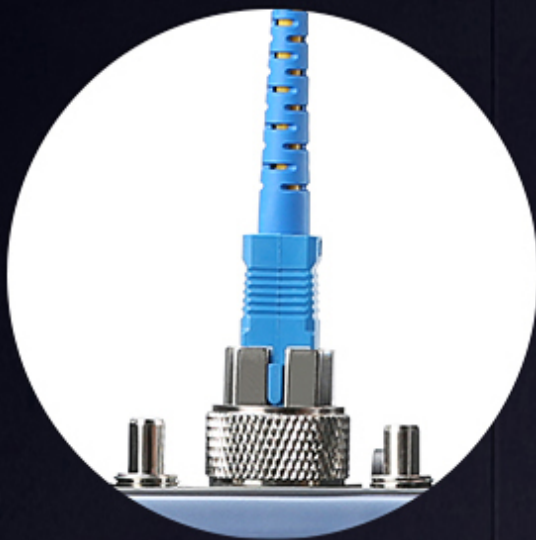


SC FC Two port universal

Different interfaces can be replaced,
and the operation is simple and practical



(FC Interface)



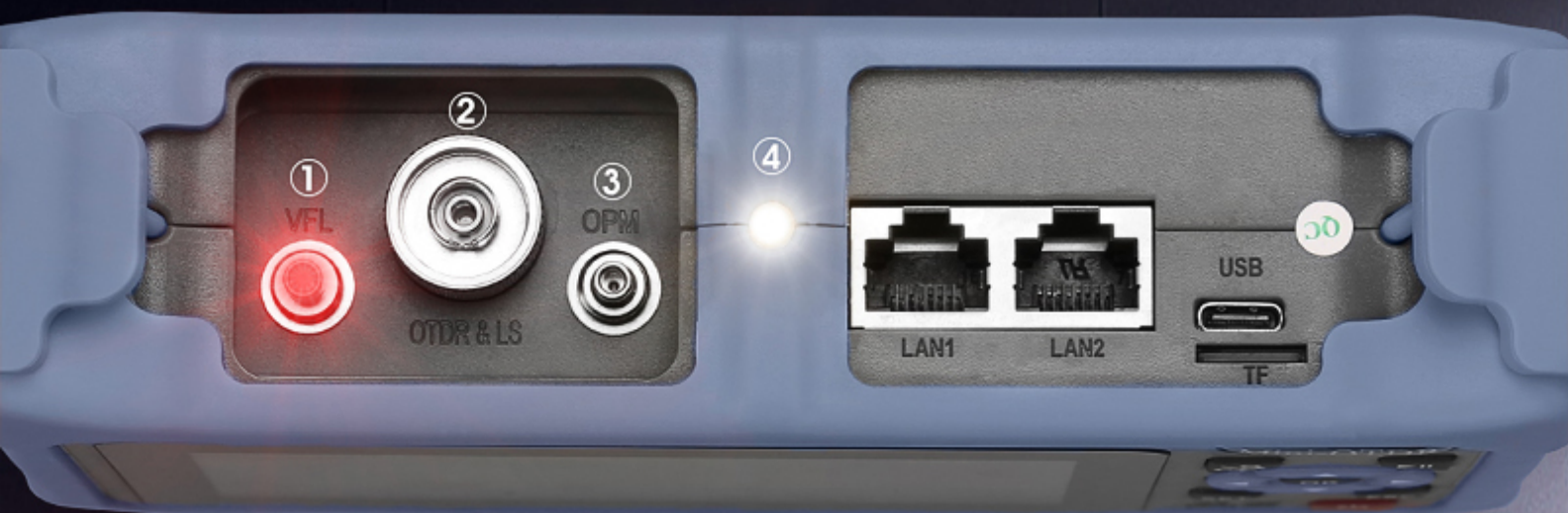
(SC Interface)



(FC Adapter)



(SC Adapter)



1.VFL Red light source interface(2.5mm currency SC/FC/ST)

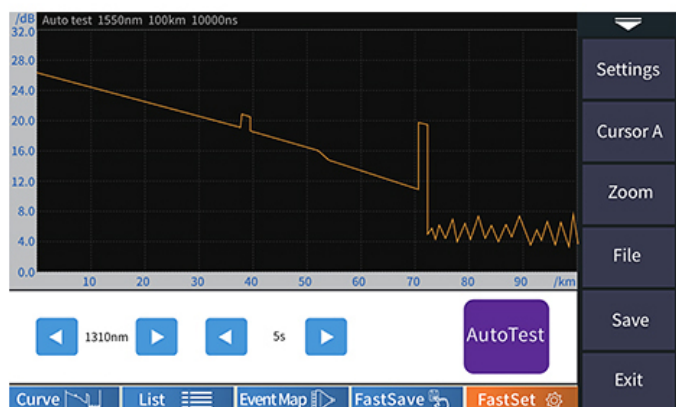
2.OTDR/Stable light source interface(Can be replaced at will SC/UPC、FC/UPC)

3.OPM Optical power meter interface(2.5mm currency SC/FC/ST)

4.LED lamp Flashlight

Introduction to some functions

1. Auto OTDR



Auto OTDR: it only needs to set the wavelength and measurement time, and other parameters are automatically selected by the instrument to complete the test

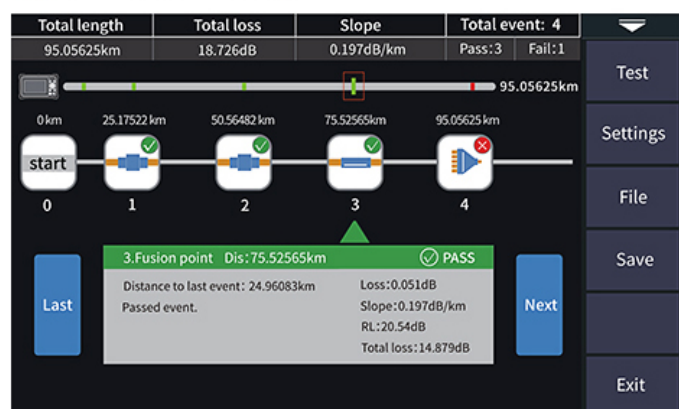
2. Expert OTDR

Expert OTDR: parameters such as wavelength, test range and pulse width shall be set

- Curve** The curve and event list are displayed at once
- List** Link results are summarized to a list
- Event Map** Switch to event icon display mode
- FastSave** Save current curve file quickly
- FastSet** Enter parameter setting interface



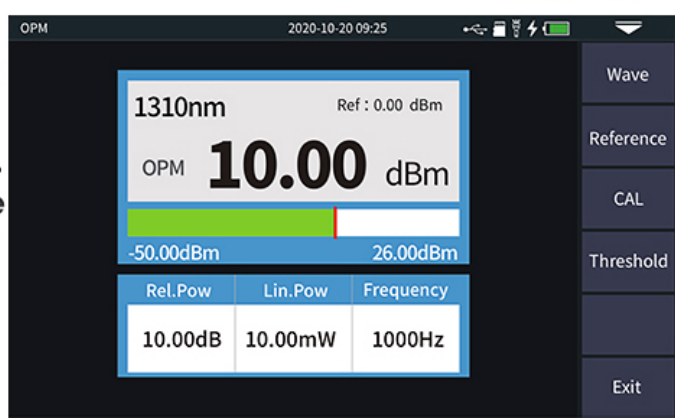
3. Event Map



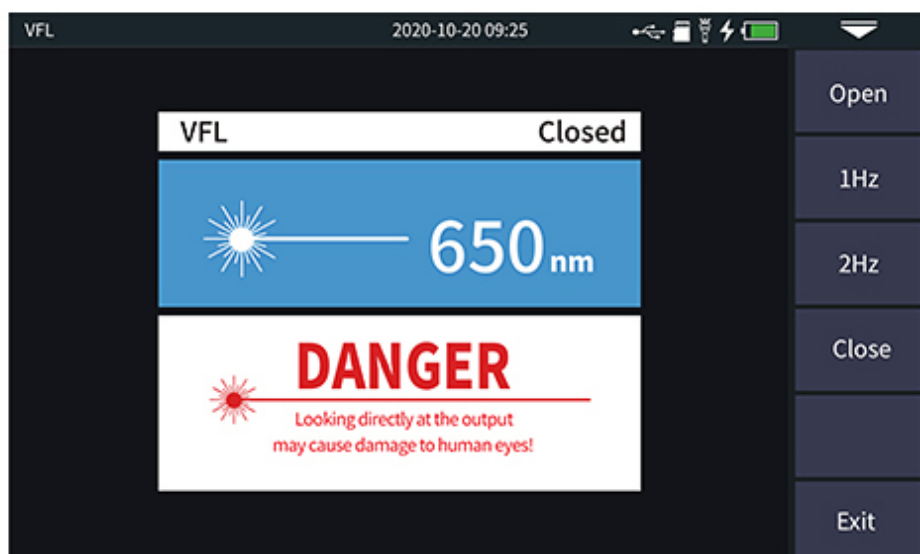
The function is fully one key automatic test, and the information such as the length of the optical fiber link to be measured, the type of the joint and the position of the breakpoint are displayed graphically, and the results are clear and easy to understand

4. OPM

It is used for signal power test and insertion loss test of various equipment and photoelectric components. It can identify and measure the power of 270/330/1k/2kHz frequency laser



5.VFL



Open: turn on the VFL and output in continuous mode

1Hz: VFL flashes at 1Hz

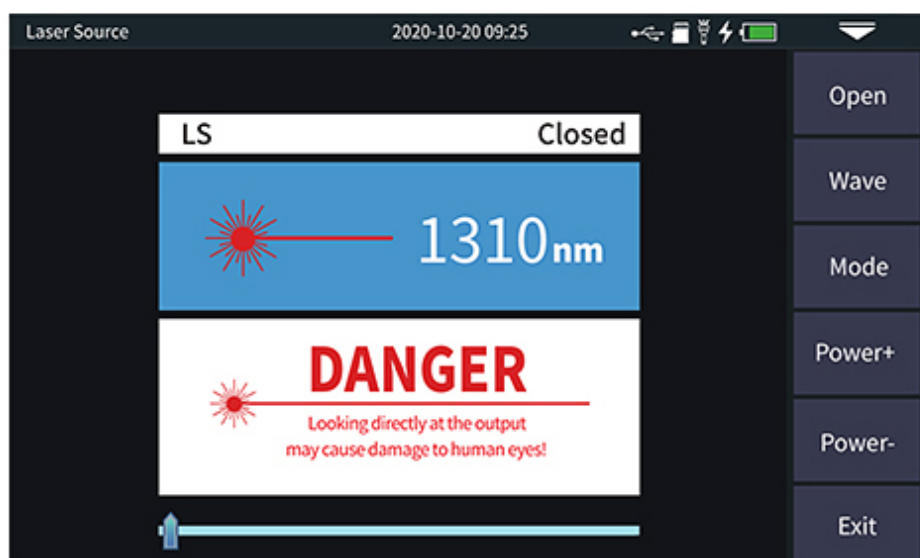
2Hz: VFL flashes at 2Hz frequency

Close: turn off VFL

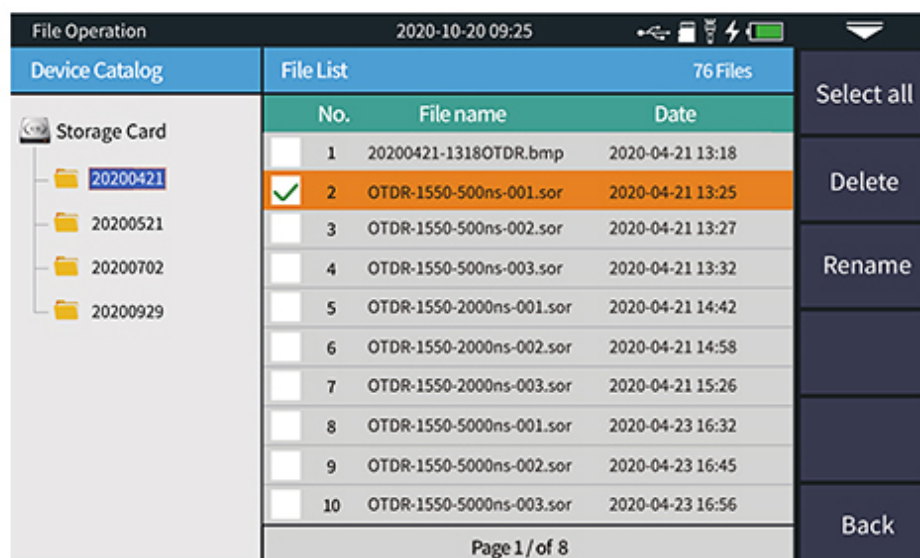
6.Laser Source

Abbreviations:LS

There are five working modes: CW、270Hz、330Hz、1kHz和2kHz



7.File Operation



File operation

All the test curves are saved in the standard SD card of the instrument. Press [File] to enter the file operation interface. You can open, delete and rename files

Note: End face detection needs to purchase accessories separately to use this function

Introduction of host function keys

